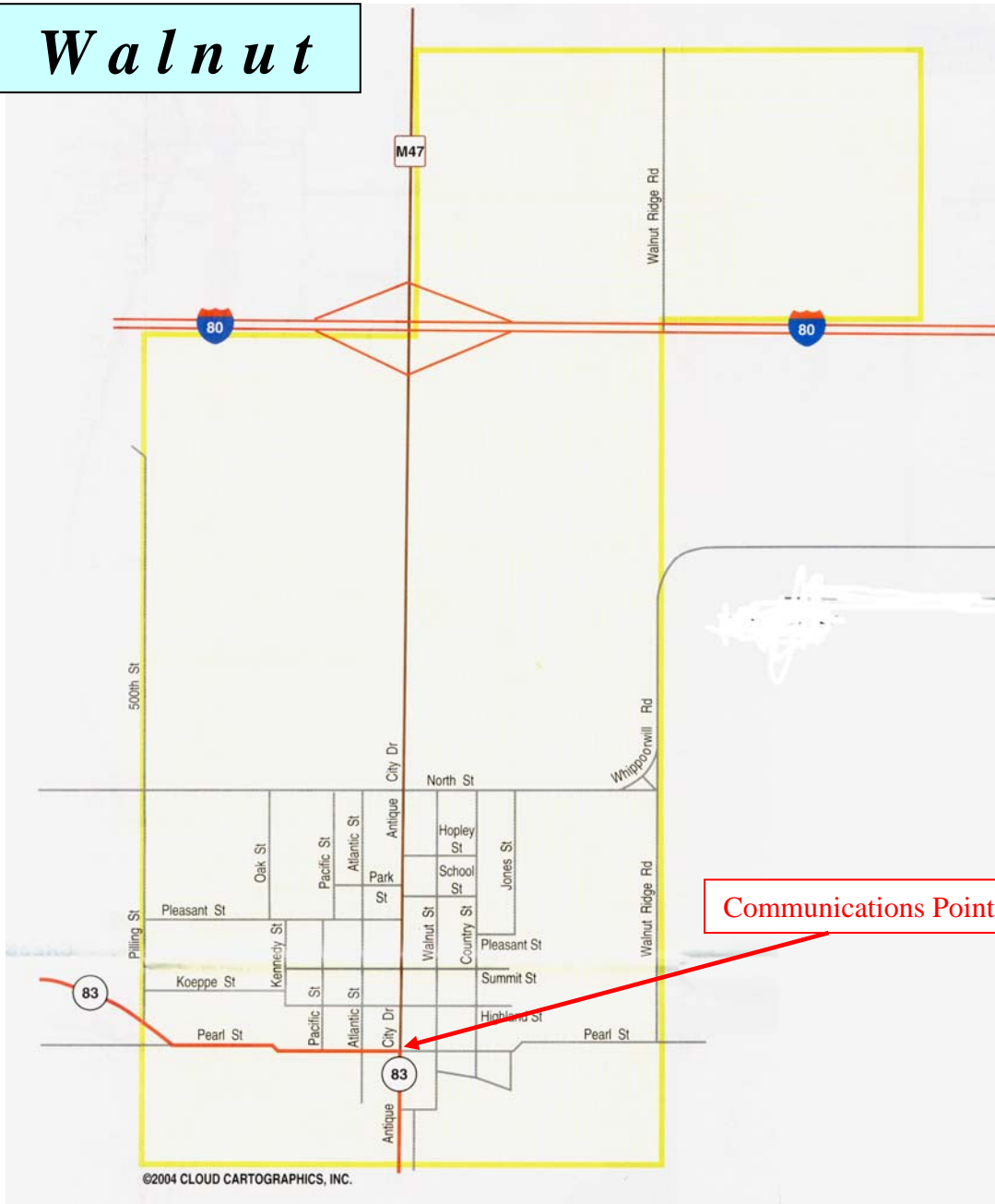


# Walnut



**Population:** 857

**GPS information:** [N41.28.658, W095.13.397]

**Communication Point:** Fire Station (Pearl & Antique City Dr.)  
City Hall (Antique City Dr. & Highland)

**Repeater signal:** Q-3

**Repeater heard:** Q-3

**Other:** Red Cross – Secondary coverage (2 meters)  
- Recommend gain type antenna for reliable communications.

**Mayor:** Lavonne Wood  
712-784-3443 (office)  
712-784 (h)

**City Clerk:** Terri Abel  
**Fire Chief:** Craig Woltmann

### Signal Rating System

Q-4 = Full Quieting  
Q-3 = Good signal, not full-quieting  
Q-2 = Very noisy, useable communications  
Q-1 = Very noisy, not able to copy

M-16  
Rev 2007